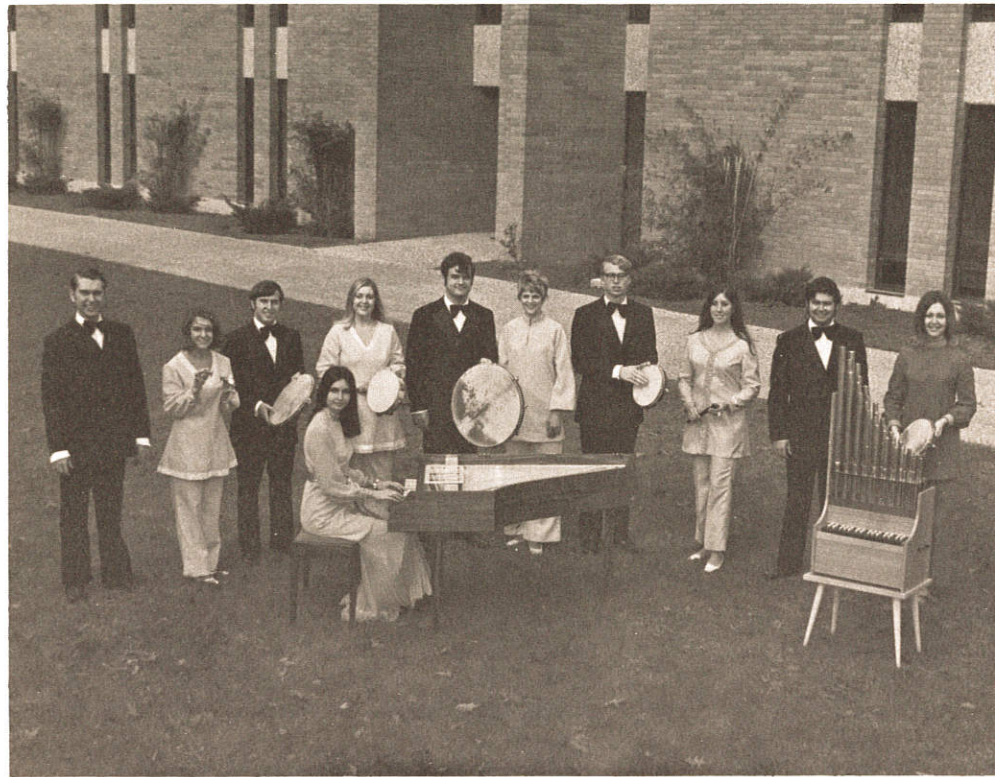

CONCERT



The University of West Florida
CHAMBER
SINGERS

Directed by G. Robert Chancellor

Second Annual Tour March, 1971

PROGRAM

I

ELIZABETHAN SONGS

Sing We and Chant It Thomas Morley

Come Again, Sweet Love John Dowland

Phyllis Hasty, soprano

April Is In My Mistress' Face Thomas Morley

In These Delightful, Pleasant Groves Henry Purcell

II

VIRGINAL MUSIC

Giles Farnaby's Dreame Giles Farnaby

La Volta William Byrd

Pat Mosley, harpsichord

III

CHANSONS

Mon coeur se recommande à vous Orlando di Lasso

Allon, gay bergeres Guillaume Costeley

IV

VILLANCICOS

Cucú, cucú, cucucú Juan del Ensina

Ríu, ríu, chíu Anonymous 16th Century

INTERMISSION

V

ROMANTIC PART-SONGS

Lovesong Waltzes, Opus 52 Johannes Brahms

1. On Danube's Border
2. O, How Calm the River Flows
3. No, I Will Not Listen to Them
4. Locksmith, Go and Bring Me Padlocks
5. How Dear, Alas, Was Life Together
6. See How Bright the Fountain Gleams
7. Nightingale, You Sing So Sweet
8. Deep in Thunder Roars the Tide

VI

OPERA SCENES

Staged by Sandra Elaine Smith

Seduction Duet,
from *Don Giovanni* Wolfgang Amadeus Mozart

Daniel Peacock, *Don Giovanni*

Candy Buchanan, *Zerlina*

Rescue Scene,
from *The Magic Flute* Wolfgang Amadeus Mozart

John Barrow, *Tamino*

Miriam Aldridge, *First Lady*

Sheila Peacock, *Second Lady*

Bonnie Linger, *Third Lady*

Comic Trio, from *The Abduction*
from *the Seraglio* Wolfgang Amadeus Mozart

Walter Conrad, *Pedrillo*

John Barrow, *Belmonte*

David Lauen, *Osmin*

VII

MUSIC OF TODAY

Three Hungarian Folk Songs Matyas Seiber

1. The Handsome Butcher
2. Apple, Apple
3. The Old Woman

CHAMBER SINGERS

Phyllis Hasty, *soprano*
Miriam Aldridge, *soprano*
Candace Buchanan, *soprano*
Sheila Peacock, *mezzo-soprano*
Bonita Linger, *mezzo-soprano*
Pat Mosley, *mezzo-soprano & accompanist*
John Barrow, *tenor*
Walter Conrad, *tenor*
Robert Chancellor, *baritone*
Daniel Peacock, *bass*
David Lauen, *bass*

THE PERFORMERS

CHAMBER SINGERS is a versatile ensemble of eleven young musicians whose concerts explore the many dimensions of vocal music. Style and authenticity unify a program of Elizabethan songs, opera scenes, Romantic part songs, chansons and folk songs.

The sound of the voices is enhanced by harpsichord, hand drums and portative organ.

THE UNIVERSITY

The University of West Florida was established in 1963 as a unit of the State University System of Florida. The new university opened its doors to its first students in September, 1967. Today more than 3,500 students attend classes at the University. Founded as an upper-division university beginning at the junior level, the University also offers graduate-level studies through 12 programs.

The University's 1,000-acre, tree-shaded main campus is located 10 miles north of Pensacola. Physical facilities include a five-story library housing 310,000 volumes, air-conditioned residence houses, and humanities complex. An auxiliary campus on nearby Santa Rosa Island, with frontage on both the Gulf of Mexico and Santa Rosa Sound, provides additional facilities for the University.

THE FACULTY OF MUSIC

The University of West Florida believes that superior musician/teachers are developed through a thorough knowledge of music history, literature, theory, and performance as well as teaching methods. The Faculty of Music has inaugurated a rigorous program involving these phases of music as a core for all music majors at the University. This Faculty presently is comprised of five members, all of whom have been chosen for performance abilities as well as academic achievement. The professional experience of these men is available to music students who choose to study symphonic repertoire, choral techniques, church music, or interpretation of piano literature.

1971 TOUR PERFORMANCES

Friday, March 19, 10:35 a.m.

CHIPOLA JUNIOR COLLEGE
Auditorium
Marianna, Florida

Sunday, March 21, 8:00 p.m.

EDISON JUNIOR COLLEGE FINE ARTS SERIES *
Port Charlotte Cultural Center
Port Charlotte, Florida

Monday, March 22, 8:00 p.m.

EDISON JUNIOR COLLEGE FINE ARTS SERIES *
Doris Corbin Auditorium
Fort Myers, Florida

Tuesday, March 23, 9:30 a.m.

FLORIDA COLLEGE
Hutchison Memorial Auditorium
Temple Terrace, Florida

Tuesday, March 23, 8:00 p.m.

EDISON JUNIOR COLLEGE FINE ARTS SERIES *
Naples High School Auditorium
Naples, Florida

Thursday, March 25, 10:00 a.m.

GULF COAST COMMUNITY COLLEGE
Fine Arts Auditorium
Panama City, Florida

Wednesday, March 31, 8:15 p.m.

THE UNIVERSITY OF WEST FLORIDA
Music Hall
Pensacola, Florida

*These concerts made possible with the support of the National Endowment for the Arts and the Fine Arts Council of Florida.